

MAXHUB Raptor Series V3 Commands

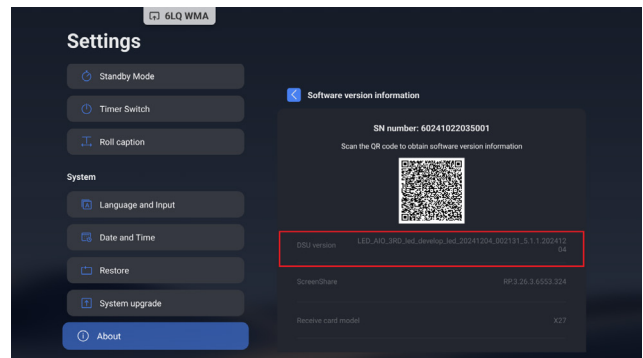
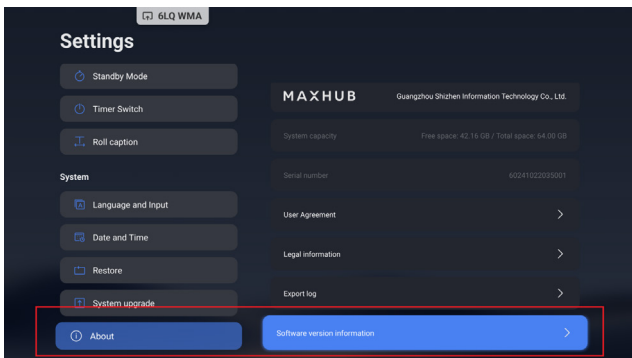


Setup Guide

V1.0 (Updated by 2/7/2025)

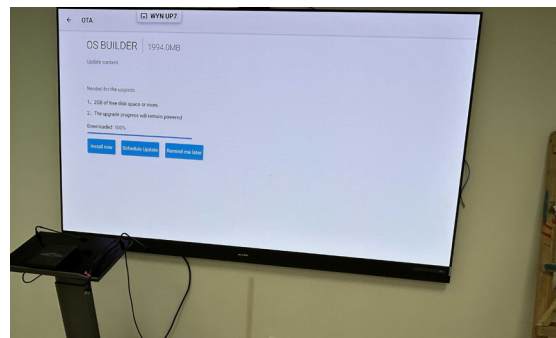
MAXHUB

1. Ensure your device's Android firmware is at least 20241204 or above. For firmware version inquiry, please go to **Settings** -> **About** -> **Software version information** -> **DSU version** -> **LED_AIO_3RD_led_develop_led_2024_1204_002131_5.1.1.20241204**

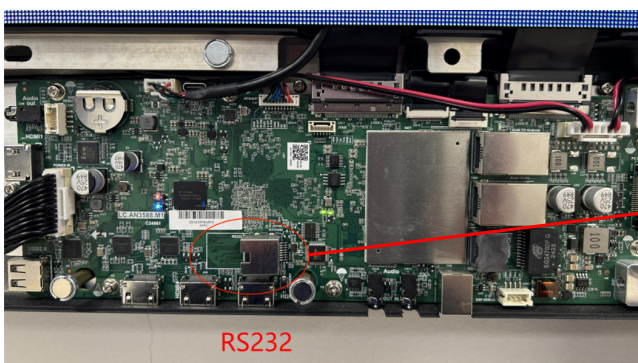


If not, please follow the below guidance to proceed with the OTA firmware update:

- 1) Connect the Raptor V3 LED display to the network.
- 2) Find and launcher the "OTA" application.
- 3) Check and update the new firmware.



2. Control method 1: RS232 serial port control.



Serial port settings on the control device:

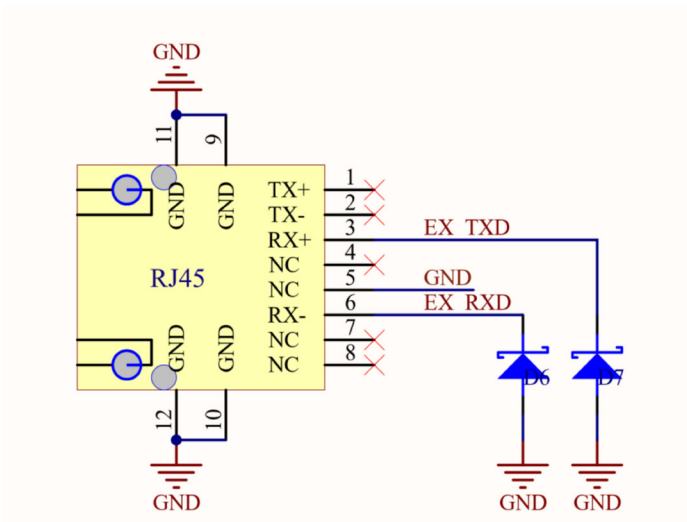
Baud rate: 115200

Data bits: 8

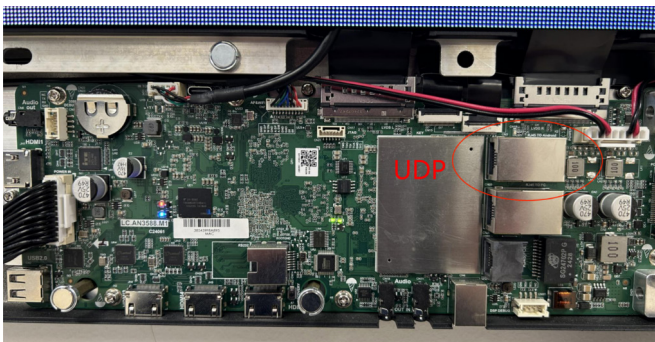
Stop bit: 1

Parity detection: None

* If there's no RS232 adapter cable onsite, you can also directly connect it according to the below definition.

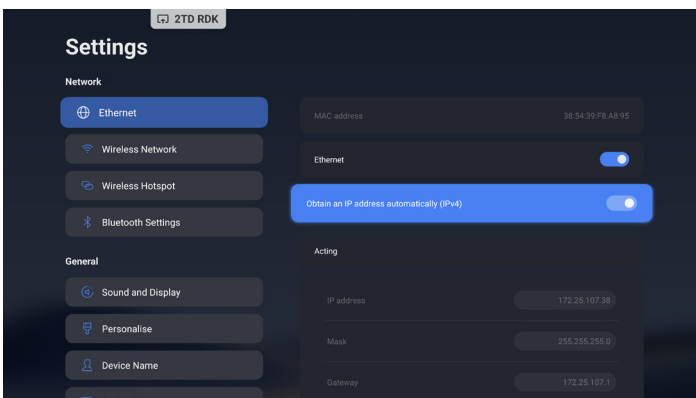


3. Control method 2: LAN port.



Protocol type: UDP
 Command sending target IP address: IP address of the current device
 Command sending target IP port: 8600
 Data type: HEX (hexadecimal)

you can check the current device IP in the Android system's settings.
 If you need to fix the IP, set the IP mode to static and fill in the corresponding IP address.



***Note:**

- 1) There is no toggle switch in the setting required to be enabled, the device will receive commands by default
- 2) There is no indication or interaction interface for some specific commands, e.g. volume, brightness, etc.

* These states are valid for firmware version 20241204 or above:

Definition	Status		
	Screen On	Screen Off	Power Off
Set status via RS232 or UDP (API command)	√	√	√ (only via RS232)
Set status via remote (IR)	√	√	√
Android system active	√	√	*
LED panel system active	√	√	*
Able to receive commands via RS232 or UDP	√	√	* (only receive the "power on" command via RS232)

Function	Note	External Device Request End Code (Hexadecimal Byte)	Android Reply Code (Hexadecimal Byte)	Remark
Get device status	Screen on	55 55 55 55 55 55 55 55 C0 01 03 01 D0 00 D1 05 C0 00 00 FF FF FF FF FF FF FF FF FF FF FF FF FF FF FF FF 00 00 00 5A	55 55 55 55 55 55 55 55 C0 01 03 00 D1 01 D0 06 C0 00 00 FF FF FF FF FF FF FF FF FF FF FF FF FF FF FF FF FF 00 01 00 80 DC	
	Screen off		55 55 55 55 55 55 55 55 C0 01 03 00 D1 01 D0 06 C0 00 00 FF FF FF FF FF FF FF FF FF FF FF FF FF FF FF FF FF 00 01 00 00 5C	
Set on/off	Screen on	55 55 55 55 55 55 55 55 C0 01 03 01 D0 00 D1 03 C0 00 00 FF FF FF FF FF FF FF FF FF FF FF FF FF FF FF FF 00 01 00 5E B7	55 55 55 55 55 55 55 55 C0 01 03 00 D1 01 D0 04 C0 00 00 FF FF FF FF FF FF FF FF FF FF FF FF FF FF FF FF FF 00 01 00 5E B8	
	Screen off	55 55 55 55 55 55 55 55 C0 01 03 01 D0 00 D1 03 C0 00 00 FF FF FF FF FF FF FF FF FF FF FF FF FF FF FF FF 00 01 00 5F B8	55 55 55 55 55 55 55 55 C0 01 03 00 D1 01 D0 04 C0 00 00 FF FF FF FF FF FF FF FF FF FF FF FF FF FF FF FF FF 00 01 00 5F B9	
Power off and Reboot	Power off	55 55 55 55 55 55 55 55 c0 01 03 01 d0 00 d1 07 c0 00 00 FF FF FF FF FF FF FF FF FF FF FF FF FF FF FF FF 00 00 00 5c	55 55 55 55 55 55 55 55 c0 01 03 00 d1 01 d0 08 c0 00 00 FF FF FF FF FF FF FF FF FF FF FF FF FF FF FF FF FF 00 00 00 5d	
	Reboot	55 55 55 55 55 55 55 55 c0 01 03 01 d0 00 d1 09 c0 00 00 FF FF FF FF FF FF FF FF FF FF FF FF FF FF FF FF 00 00 00 5e	55 55 55 55 55 55 55 55 c0 01 03 00 d1 01 d0 0a c0 00 00 FF FF FF FF FF FF FF FF FF FF FF FF FF FF FF FF FF 00 00 00 5f	Shut down and reboot the device when receiving the command in normal operation.
Power on	Power on	AA BB CC 01 00 00 01 DD EE FF		Power up the device when it is in power-off status. *Note: This command only works with RS232, and does not work with the UDP protocol.

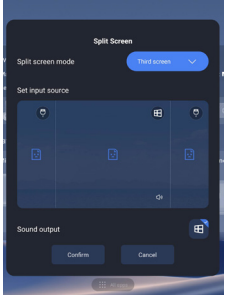
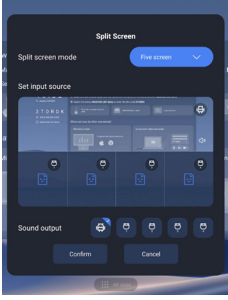
Continued:

Function	Note	External Device Request End Code (Hexadecimal Byte)	Android Reply Code (Hexadecimal Byte)	Remark
Set contrast	0	55 55 55 55 55 55 55 C0 01 03 01 D0 00 D1 59 C2 00 00 FF FF FF FF FF FF FF FF FF FF FF FF FF FF FF FF 00 01 00 00 B1	55 55 55 55 55 55 55 C0 01 03 00 D1 01 D0 5A C2 00 00 FF FF FF FF FF FF FF FF FF FF FF FF FF FF FF FF 00 02 00 01 00 B4	
	10	55 55 55 55 55 55 55 C0 01 03 01 D0 00 D1 59 C2 00 00 FF FF FF FF FF FF FF FF FF FF FF FF FF FF FF FF 00 01 00 0A BB	55 55 55 55 55 55 55 C0 01 03 00 D1 01 D0 5A C2 00 00 FF FF FF FF FF FF FF FF FF FF FF FF FF FF FF FF 00 02 00 01 00 B4	
	20	55 55 55 55 55 55 55 C0 01 03 01 D0 00 D1 59 C2 00 00 FF FF FF FF FF FF FF FF FF FF FF FF FF FF FF FF 00 01 00 14 C5	55 55 55 55 55 55 55 C0 01 03 00 D1 01 D0 5A C2 00 00 FF FF FF FF FF FF FF FF FF FF FF FF FF FF FF FF 00 02 00 01 00 B4	
	30	55 55 55 55 55 55 55 C0 01 03 01 D0 00 D1 59 C2 00 00 FF FF FF FF FF FF FF FF FF FF FF FF FF FF FF FF 00 01 00 1E CF	55 55 55 55 55 55 55 C0 01 03 00 D1 01 D0 5A C2 00 00 FF FF FF FF FF FF FF FF FF FF FF FF FF FF FF FF 00 02 00 01 00 B4	
	40	55 55 55 55 55 55 55 C0 01 03 01 D0 00 D1 59 C2 00 00 FF FF FF FF FF FF FF FF FF FF FF FF FF FF FF FF 00 01 00 28 D9	55 55 55 55 55 55 55 C0 01 03 00 D1 01 D0 5A C2 00 00 FF FF FF FF FF FF FF FF FF FF FF FF FF FF FF FF 00 02 00 01 00 B4	
	50	55 55 55 55 55 55 55 C0 01 03 01 D0 00 D1 59 C2 00 00 FF FF FF FF FF FF FF FF FF FF FF FF FF FF FF FF 00 01 00 32 E3	55 55 55 55 55 55 55 C0 01 03 00 D1 01 D0 5A C2 00 00 FF FF FF FF FF FF FF FF FF FF FF FF FF FF FF FF 00 02 00 01 00 B4	
	60	55 55 55 55 55 55 55 C0 01 03 01 D0 00 D1 59 C2 00 00 FF FF FF FF FF FF FF FF FF FF FF FF FF FF FF FF 00 01 00 3C ED	55 55 55 55 55 55 55 C0 01 03 00 D1 01 D0 5A C2 00 00 FF FF FF FF FF FF FF FF FF FF FF FF FF FF FF FF 00 02 00 01 00 B4	
	70	55 55 55 55 55 55 55 C0 01 03 01 D0 00 D1 59 C2 00 00 FF FF FF FF FF FF FF FF FF FF FF FF FF FF FF FF 00 01 00 46 F7	55 55 55 55 55 55 55 C0 01 03 00 D1 01 D0 5A C2 00 00 FF FF FF FF FF FF FF FF FF FF FF FF FF FF FF FF 00 02 00 01 00 B4	
	80	55 55 55 55 55 55 55 C0 01 03 01 D0 00 D1 59 C2 00 00 FF FF FF FF FF FF FF FF FF FF FF FF FF FF FF FF 00 01 00 50 01	55 55 55 55 55 55 55 C0 01 03 00 D1 01 D0 5A C2 00 00 FF FF FF FF FF FF FF FF FF FF FF FF FF FF FF FF 00 02 00 01 00 B4	
	90	55 55 55 55 55 55 55 C0 01 03 01 D0 00 D1 59 C2 00 00 FF FF FF FF FF FF FF FF FF FF FF FF FF FF FF FF 00 01 00 5A 0B	55 55 55 55 55 55 55 C0 01 03 00 D1 01 D0 5A C2 00 00 FF FF FF FF FF FF FF FF FF FF FF FF FF FF FF FF 00 02 00 01 00 B4	
	100	55 55 55 55 55 55 55 C0 01 03 01 D0 00 D1 59 C2 00 00 FF FF FF FF FF FF FF FF FF FF FF FF FF FF FF FF 00 01 00 64 15	55 55 55 55 55 55 55 C0 01 03 00 D1 01 D0 5A C2 00 00 FF FF FF FF FF FF FF FF FF FF FF FF FF FF FF FF 00 02 00 01 00 B4	
Query contrast	Query the current contrast value	55 55 55 55 55 55 55 C0 01 03 01 D0 00 D1 57 c2 00 00 FF FF FF FF FF FF FF FF FF FF FF FF FF FF FF FF 00 00 00 AE	55 55 55 55 55 55 55 C0 01 03 00 D1 01 D0 58 C2 00 00 FF FF FF FF FF FF FF FF FF FF FF FF FF FF FF FF 00 01 00 64 14	Return contrast value

Continued:

Function	Note	External Device Request End Code (Hexadecimal Byte)	Android Reply Code (Hexadecimal Byte)	Remark
Set the video source	0 (ANDROID)	55 55 55 55 55 55 55 55 C0 01 03 01 D0 00 D1 13 C2 00 00 FF FF FF FF FF FF FF FF FF FF FF FF FF FF FF FF 00 01 00 00 6B	55 55 55 55 55 55 55 55 C0 01 03 00 D1 01 D0 14 C2 00 00 FF FF FF FF FF FF FF FF FF FF FF FF FF FF FF FF 00 02 00 01 00 6E	
	1 (Windows)	55 55 55 55 55 55 55 55 C0 01 03 01 D0 00 D1 13 C2 00 00 FF FF FF FF FF FF FF FF FF FF FF FF FF FF FF FF 00 01 00 01 6C	55 55 55 55 55 55 55 55 C0 01 03 00 D1 01 D0 14 C2 00 00 FF FF FF FF FF FF FF FF FF FF FF FF FF FF FF FF 00 02 00 01 00 6E	
	2 (HDMI1)	55 55 55 55 55 55 55 55 C0 01 03 01 D0 00 D1 13 C2 00 00 FF FF FF FF FF FF FF FF FF FF FF FF FF FF FF FF 00 01 00 02 6D	55 55 55 55 55 55 55 55 C0 01 03 00 D1 01 D0 14 C2 00 00 FF FF FF FF FF FF FF FF FF FF FF FF FF FF FF FF 00 02 00 01 00 6E	
	3 (HDMI2)	55 55 55 55 55 55 55 55 C0 01 03 01 D0 00 D1 13 C2 00 00 FF FF FF FF FF FF FF FF FF FF FF FF FF FF FF FF 00 01 00 03 6E	55 55 55 55 55 55 55 55 C0 01 03 00 D1 01 D0 14 C2 00 00 FF FF FF FF FF FF FF FF FF FF FF FF FF FF FF FF 00 02 00 01 00 6E	
	4 (HDMI3)	55 55 55 55 55 55 55 55 C0 01 03 01 D0 00 D1 13 C2 00 00 FF FF FF FF FF FF FF FF FF FF FF FF FF FF FF FF 00 01 00 04 6F	55 55 55 55 55 55 55 55 C0 01 03 00 D1 01 D0 14 C2 00 00 FF FF FF FF FF FF FF FF FF FF FF FF FF FF FF FF 00 02 00 01 00 6E	
	6 (HDMI4)	55 55 55 55 55 55 55 55 C0 01 03 01 D0 00 D1 13 C2 00 00 FF FF FF FF FF FF FF FF FF FF FF FF FF FF FF FF 00 01 00 06 71	55 55 55 55 55 55 55 55 C0 01 03 00 D1 01 D0 14 C2 00 00 FF FF FF FF FF FF FF FF FF FF FF FF FF FF FF FF 00 02 00 01 00 6E	Raptor V3 feature 4 HDMI inputs
Query the current video source		55 55 55 55 55 55 55 55 C0 01 03 01 D0 00 D1 11 C2 00 00 FF FF FF FF FF FF FF FF FF FF FF FF FF FF FF FF 00 00 00 68	55 55 55 55 55 55 55 55 C0 01 03 00 D1 01 D0 12 C2 00 00 FF FF FF FF FF FF FF FF FF FF FF FF FF FF FF FF 00 01 00 00 6A	Check the current displaying signal channel 0(ANDROID), 1(Windows), 2(HDMI1), 3(HDMI2), 4(HDMI3), 6(HDMI4)

Continued:

Function	Note	External Device Request End Code (Hexadecimal Byte)	Android Reply Code (Hexadecimal Byte)	Remark
Split Screen mode	Full screen	55 55 55 55 55 55 55 55 C0 01 03 01 D0 00 D1 49 C2 00 00 FF FF FF FF FF FF FF FF FF FF FF FF FF FF FF FF 00 01 00 00 A1	55 55 55 55 55 55 55 55 C0 01 03 00 D1 01 D0 4A C2 00 00 FF FF FF FF FF FF FF FF FF FF FF FF FF FF FF 00 02 00 01 00 A4	
	Picture by picture	55 55 55 55 55 55 55 55 C0 01 03 01 D0 00 D1 49 C2 00 00 FF FF FF FF FF FF FF FF FF FF FF FF FF FF FF FF 00 01 00 02 A3	55 55 55 55 55 55 55 55 C0 01 03 00 D1 01 D0 4A C2 00 00 FF FF FF FF FF FF FF FF FF FF FF FF FF FF FF 00 02 00 01 00 A4	
	Three-split screen	55 55 55 55 55 55 55 55 C0 01 03 01 D0 00 D1 49 C2 00 00 FF FF FF FF FF FF FF FF FF FF FF FF FF FF FF FF 00 01 00 01 A2	55 55 55 55 55 55 55 55 C0 01 03 00 D1 01 D0 4A C2 00 00 FF FF FF FF FF FF FF FF FF FF FF FF FF FF FF 00 02 00 01 00 A4	
	Quadrants	55 55 55 55 55 55 55 55 C0 01 03 01 D0 00 D1 49 C2 00 00 FF FF FF FF FF FF FF FF FF FF FF FF FF FF FF FF 00 01 00 03 A4	55 55 55 55 55 55 55 55 C0 01 03 00 D1 01 D0 4A C2 00 00 FF FF FF FF FF FF FF FF FF FF FF FF FF FF FF 00 02 00 01 00 A4	
	Five-split screen	55 55 55 55 55 55 55 55 C0 01 03 01 D0 00 D1 49 C2 00 00 FF FF FF FF FF FF FF FF FF FF FF FF FF FF FF FF 00 01 00 05 A6	55 55 55 55 55 55 55 55 C0 01 03 00 D1 01 D0 4A C2 00 00 FF FF FF FF FF FF FF FF FF FF FF FF FF FF FF 00 02 00 01 00 A4	
	Custom	55 55 55 55 55 55 55 55 C0 01 03 01 D0 00 D1 49 C2 00 00 FF FF FF FF FF FF FF FF FF FF FF FF FF FF FF FF 00 01 00 20 C1	55 55 55 55 55 55 55 55 C0 01 03 00 D1 01 D0 4A C2 00 00 FF FF FF FF FF FF FF FF FF FF FF FF FF FF FF 00 02 00 01 00 A4	

Continued:

Function	Note	External Device Request End Code (Hexadecimal Byte)	Android Reply Code (Hexadecimal Byte)	Remark
Set contrast	0	55 55 55 55 55 55 55 55 C0 01 03 01 D0 00 D1 17 C2 00 00 FF FF FF FF FF FF FF FF FF FF FF FF FF FF FF FF 00 01 00 00 6F	55 55 55 55 55 55 55 55 C0 01 03 00 D1 01 D0 18 C2 00 00 FF FF FF FF FF FF FF FF FF FF FF FF FF FF FF FF 00 02 00 01 00 72	Set 0 volume means silence
	25	55 55 55 55 55 55 55 55 C0 01 03 01 D0 00 D1 17 C2 00 00 FF FF FF FF FF FF FF FF FF FF FF FF FF FF FF FF 00 01 00 19 88	55 55 55 55 55 55 55 55 C0 01 03 00 D1 01 D0 18 C2 00 00 FF FF FF FF FF FF FF FF FF FF FF FF FF FF FF FF 00 02 00 01 00 72	
	50	55 55 55 55 55 55 55 55 C0 01 03 01 D0 00 D1 17 C2 00 00 FF FF FF FF FF FF FF FF FF FF FF FF FF FF FF FF 00 01 00 32 A1	55 55 55 55 55 55 55 55 C0 01 03 00 D1 01 D0 18 C2 00 00 FF FF FF FF FF FF FF FF FF FF FF FF FF FF FF FF 00 02 00 01 00 72	
	75	55 55 55 55 55 55 55 55 C0 01 03 01 D0 00 D1 17 C2 00 00 FF FF FF FF FF FF FF FF FF FF FF FF FF FF FF FF 00 01 00 4B BA	55 55 55 55 55 55 55 55 C0 01 03 00 D1 01 D0 18 C2 00 00 FF FF FF FF FF FF FF FF FF FF FF FF FF FF FF FF 00 02 00 01 00 72	
	100	55 55 55 55 55 55 55 55 C0 01 03 01 D0 00 D1 17 C2 00 00 FF FF FF FF FF FF FF FF FF FF FF FF FF FF FF FF 00 01 00 64 D3	55 55 55 55 55 55 55 55 C0 01 03 00 D1 01 D0 18 C2 00 00 FF FF FF FF FF FF FF FF FF FF FF FF FF FF FF FF 00 02 00 01 00 72	
Query contrast	Query the current contrast	55 55 55 55 55 55 55 55 C0 01 03 01 D0 00 D1 15 C2 00 00 FF FF FF FF FF FF FF FF FF FF FF FF FF FF FF FF 00 00 00 6C	55 55 55 55 55 55 55 55 C0 01 03 00 D1 01 D0 16 C2 00 00 FF FF FF FF FF FF FF FF FF FF FF FF FF FF FF FF 00 01 00 32 A0	Return contrast value
Set color temperature mode	Standard0x02	55 55 55 55 55 55 55 55 C0 01 03 01 D0 00 D1 1B C2 00 00 FF FF FF FF FF FF FF FF FF FF FF FF FF FF FF FF 00 01 00 01 74	55 55 55 55 55 55 55 55 C0 01 03 00 D1 01 D0 1C C2 00 00 FF FF FF FF FF FF FF FF FF FF FF FF FF FF FF FF 00 02 00 01 00 76	
	Warm0x02	55 55 55 55 55 55 55 55 C0 01 03 01 D0 00 D1 1B C2 00 00 FF FF FF FF FF FF FF FF FF FF FF FF FF FF FF FF 00 01 00 02 75	55 55 55 55 55 55 55 55 C0 01 03 00 D1 01 D0 1C C2 00 00 FF FF FF FF FF FF FF FF FF FF FF FF FF FF FF FF 00 02 00 01 00 76	
	Cold0x03	55 55 55 55 55 55 55 55 C0 01 03 01 D0 00 D1 1B C2 00 00 FF FF FF FF FF FF FF FF FF FF FF FF FF FF FF FF 00 01 00 03 76	55 55 55 55 55 55 55 55 C0 01 03 00 D1 01 D0 1C C2 00 00 FF FF FF FF FF FF FF FF FF FF FF FF FF FF FF FF 00 02 00 01 00 76	
	Custom0x04	55 55 55 55 55 55 55 55 C0 01 03 01 D0 00 D1 1B C2 00 00 FF FF FF FF FF FF FF FF FF FF FF FF FF FF FF FF 00 01 00 04 77	55 55 55 55 55 55 55 55 C0 01 03 00 D1 01 D0 1C C2 00 00 FF FF FF FF FF FF FF FF FF FF FF FF FF FF FF FF 00 02 00 01 00 76	
Set scene mode	Meeting mode	55 55 55 55 55 55 55 55 C0 01 03 01 D0 00 D1 45 C2 00 00 FF FF FF FF FF FF FF FF FF FF FF FF FF FF FF FF 00 01 00 00 9D	55 55 55 55 55 55 55 55 C0 01 03 00 D1 01 D0 46 C2 00 00 FF FF FF FF FF FF FF FF FF FF FF FF FF FF FF FF 00 02 00 01 00 A0	
	presentation mode	55 55 55 55 55 55 55 55 C0 01 03 01 D0 00 D1 45 C2 00 00 FF FF FF FF FF FF FF FF FF FF FF FF FF FF FF FF 00 01 00 01 9E	55 55 55 55 55 55 55 55 C0 01 03 00 D1 01 D0 46 C2 00 00 FF FF FF FF FF FF FF FF FF FF FF FF FF FF FF FF 00 02 00 01 00 A0	
	Energy saving mode	55 55 55 55 55 55 55 55 C0 01 03 01 D0 00 D1 45 C2 00 00 FF FF FF FF FF FF FF FF FF FF FF FF FF FF FF FF 00 01 00 02 9F	55 55 55 55 55 55 55 55 C0 01 03 00 D1 01 D0 46 C2 00 00 FF FF FF FF FF FF FF FF FF FF FF FF FF FF FF FF 00 02 00 01 00 A0	
	Theater mode	55 55 55 55 55 55 55 55 C0 01 03 01 D0 00 D1 45 C2 00 00 FF FF FF FF FF FF FF FF FF FF FF FF FF FF FF FF 00 01 00 05 A2	55 55 55 55 55 55 55 55 C0 01 03 00 D1 01 D0 46 C2 00 00 FF FF FF FF FF FF FF FF FF FF FF FF FF FF FF FF 00 02 00 01 00 A0	

Continued:

Function	Note	External Device Request End Code (Hexadecimal Byte)	Android Reply Code (Hexadecimal Byte)	Remark
Query scene mode		55 55 55 55 55 55 55 55 C0 01 03 01 D0 00 D1 43 C2 00 00 FF FF FF FF FF FF FF FF FF FF FF FF FF FF FF FF 00 00 00 9A	55 55 55 55 55 55 55 55 C0 01 03 00 D1 01 D0 44 C2 00 00 FF FF FF FF FF FF FF FF FF FF FF FF FF FF FF FF FF 00 01 00 00 9C	Return screen mode
Set Red Gain	0	55 55 55 55 55 55 55 55 C0 01 03 01 D0 00 D1 23 C2 00 00 FF FF FF FF FF FF FF FF FF FF FF FF FF FF FF FF 00 01 00 00 7B	55 55 55 55 55 55 55 55 C0 01 03 00 D1 01 D0 24 C2 00 00 FF FF FF FF FF FF FF FF FF FF FF FF FF FF FF FF FF 00 02 00 01 00 7E	
	25	55 55 55 55 55 55 55 55 C0 01 03 01 D0 00 D1 23 C2 00 00 FF FF FF FF FF FF FF FF FF FF FF FF FF FF FF FF 00 01 00 19 94	55 55 55 55 55 55 55 55 C0 01 03 00 D1 01 D0 24 C2 00 00 FF FF FF FF FF FF FF FF FF FF FF FF FF FF FF FF FF 00 02 00 01 00 7E	
	50	55 55 55 55 55 55 55 55 C0 01 03 01 D0 00 D1 23 C2 00 00 FF FF FF FF FF FF FF FF FF FF FF FF FF FF FF FF 00 01 00 32 AD	55 55 55 55 55 55 55 55 C0 01 03 00 D1 01 D0 24 C2 00 00 FF FF FF FF FF FF FF FF FF FF FF FF FF FF FF FF FF 00 02 00 01 00 7E	
	75	55 55 55 55 55 55 55 55 C0 01 03 01 D0 00 D1 23 C2 00 00 FF FF FF FF FF FF FF FF FF FF FF FF FF FF FF FF 00 01 00 4B C6	55 55 55 55 55 55 55 55 C0 01 03 00 D1 01 D0 24 C2 00 00 FF FF FF FF FF FF FF FF FF FF FF FF FF FF FF FF FF 00 02 00 01 00 7E	
	100	55 55 55 55 55 55 55 55 C0 01 03 01 D0 00 D1 23 C2 00 00 FF FF FF FF FF FF FF FF FF FF FF FF FF FF FF FF 00 01 00 64 DF	55 55 55 55 55 55 55 55 C0 01 03 00 D1 01 D0 24 C2 00 00 FF FF FF FF FF FF FF FF FF FF FF FF FF FF FF FF FF 00 02 00 01 00 7E	
Query Red Gain value	Query the current Red Gain value	55 55 55 55 55 55 55 55 C0 01 03 01 D0 00 D1 21 C2 00 00 FF FF FF FF FF FF FF FF FF FF FF FF FF FF FF FF 00 00 00 78	55 55 55 55 55 55 55 55 C0 01 03 00 D1 01 D0 22 C2 00 00 FF FF FF FF FF FF FF FF FF FF FF FF FF FF FF FF FF 00 01 00 46 C0	Return Red Gain value
Query Green Gain value	0	55 55 55 55 55 55 55 55 C0 01 03 01 D0 00 D1 27 C2 00 00 FF FF FF FF FF FF FF FF FF FF FF FF FF FF FF FF 00 01 00 00 7F	55 55 55 55 55 55 55 55 C0 01 03 00 D1 01 D0 28 C2 00 00 FF FF FF FF FF FF FF FF FF FF FF FF FF FF FF FF FF 00 02 00 01 00 82	
	25	55 55 55 55 55 55 55 55 C0 01 03 01 D0 00 D1 27 C2 00 00 FF FF FF FF FF FF FF FF FF FF FF FF FF FF FF FF 00 01 00 19 98	55 55 55 55 55 55 55 55 C0 01 03 00 D1 01 D0 28 C2 00 00 FF FF FF FF FF FF FF FF FF FF FF FF FF FF FF FF FF 00 02 00 01 00 82	
	50	55 55 55 55 55 55 55 55 C0 01 03 01 D0 00 D1 27 C2 00 00 FF FF FF FF FF FF FF FF FF FF FF FF FF FF FF FF 00 01 00 32 B1	55 55 55 55 55 55 55 55 C0 01 03 00 D1 01 D0 28 C2 00 00 FF FF FF FF FF FF FF FF FF FF FF FF FF FF FF FF FF 00 02 00 01 00 82	
	75	55 55 55 55 55 55 55 55 C0 01 03 01 D0 00 D1 27 C2 00 00 FF FF FF FF FF FF FF FF FF FF FF FF FF FF FF FF 00 01 00 4B CA	55 55 55 55 55 55 55 55 C0 01 03 00 D1 01 D0 28 C2 00 00 FF FF FF FF FF FF FF FF FF FF FF FF FF FF FF FF FF 00 02 00 01 00 82	
	100	55 55 55 55 55 55 55 55 C0 01 03 01 D0 00 D1 27 C2 00 00 FF FF FF FF FF FF FF FF FF FF FF FF FF FF FF FF 00 01 00 64 E3	55 55 55 55 55 55 55 55 C0 01 03 00 D1 01 D0 28 C2 00 00 FF FF FF FF FF FF FF FF FF FF FF FF FF FF FF FF FF 00 02 00 01 00 82	

Continued:

Function	Note	External Device Request End Code (Hexadecimal Byte)	Android Reply Code (Hexadecimal Byte)	Remark
Query Green Gain value	Query the current Green Gain value	55 55 55 55 55 55 55 C0 01 03 01 D0 00 D1 25 C2 00 00 FF FF FF FF FF FF FF FF FF FF FF FF FF FF FF FF 00 00 00 7C	55 55 55 55 55 55 55 C0 01 03 00 D1 01 D0 26 C2 00 00 FF FF FF FF FF FF FF FF FF FF FF FF FF FF FF FF 00 01 00 64 E2	Return Green Gain value
Set Blue Gain value	0	55 55 55 55 55 55 55 C0 01 03 01 D0 00 D1 2B C2 00 00 FF FF FF FF FF FF FF FF FF FF FF FF FF FF FF FF 00 01 00 00 83	55 55 55 55 55 55 55 C0 01 03 00 D1 01 D0 2C C2 00 00 FF FF FF FF FF FF FF FF FF FF FF FF FF FF FF FF 00 02 00 01 00 86	
	25	55 55 55 55 55 55 55 C0 01 03 01 D0 00 D1 2B C2 00 00 FF FF FF FF FF FF FF FF FF FF FF FF FF FF FF FF 00 01 00 19 9C	55 55 55 55 55 55 55 C0 01 03 00 D1 01 D0 2C C2 00 00 FF FF FF FF FF FF FF FF FF FF FF FF FF FF FF FF 00 02 00 01 00 86	
	50	55 55 55 55 55 55 55 C0 01 03 01 D0 00 D1 2B C2 00 00 FF FF FF FF FF FF FF FF FF FF FF FF FF FF FF FF 00 01 00 32 B5	55 55 55 55 55 55 55 C0 01 03 00 D1 01 D0 2C C2 00 00 FF FF FF FF FF FF FF FF FF FF FF FF FF FF FF FF 00 02 00 01 00 86	
	75	55 55 55 55 55 55 55 C0 01 03 01 D0 00 D1 2B C2 00 00 FF FF FF FF FF FF FF FF FF FF FF FF FF FF FF FF 00 01 00 4B CE	55 55 55 55 55 55 55 C0 01 03 00 D1 01 D0 2C C2 00 00 FF FF FF FF FF FF FF FF FF FF FF FF FF FF FF FF 00 02 00 01 00 86	
	100	55 55 55 55 55 55 55 C0 01 03 01 D0 00 D1 2B C2 00 00 FF FF FF FF FF FF FF FF FF FF FF FF FF FF FF FF 00 01 00 64 E7	55 55 55 55 55 55 55 C0 01 03 00 D1 01 D0 2C C2 00 00 FF FF FF FF FF FF FF FF FF FF FF FF FF FF FF FF 00 02 00 01 00 86	
Query Blue Gain value	Query the current Blue Gain value	55 55 55 55 55 55 55 C0 01 03 01 D0 00 D1 29 C2 00 00 FF FF FF FF FF FF FF FF FF FF FF FF FF FF FF FF 00 00 00 80	55 55 55 55 55 55 55 C0 01 03 00 D1 01 D0 2A C2 00 00 FF FF FF FF FF FF FF FF FF FF FF FF FF FF FF FF 00 01 00 64 E6	Return Blue Gain value
Get screen monitoring information		55 55 55 55 55 55 55 C0 01 03 01 D0 00 D1 31 C1 00 00 FF FF FF FF FF FF FF FF FF FF FF FF FF FF FF FF 00 01 00 00 88	55 55 55 55 55 55 55 C0 01 03 00 D1 01 D0 32 C1 00 00 FF FF FF FF FF FF FF FF FF FF FF FF FF FF FF 00 76 00 01 00 00 10 10 00 04 04 04 04 00 00 00 00 00 00 00 00 00 00 00 00 00 00 01 25 4C 01 00 01 01 2C 4D 01 00 02 01 2C 4C 01 00 03 01 2A 4B 01 01 00 01 2D 4B 01 01 01 01 2F 4D 01 01 02 01 2E 4A 01 01 03 01 2C 4B 01 02 00 01 2F 4C 01 02 01 01 2E 4B 01 02 02 01 2E 4E 01 02 03 01 2E 4B 01 03 00 01 2A 4B 01 03 01 01 2E 4D 01 03 02 01 2E 4C 01 03 03 01 30 4C 01 08	

MAXHUB

